

FIND YOUR Perfect Fall Pairings

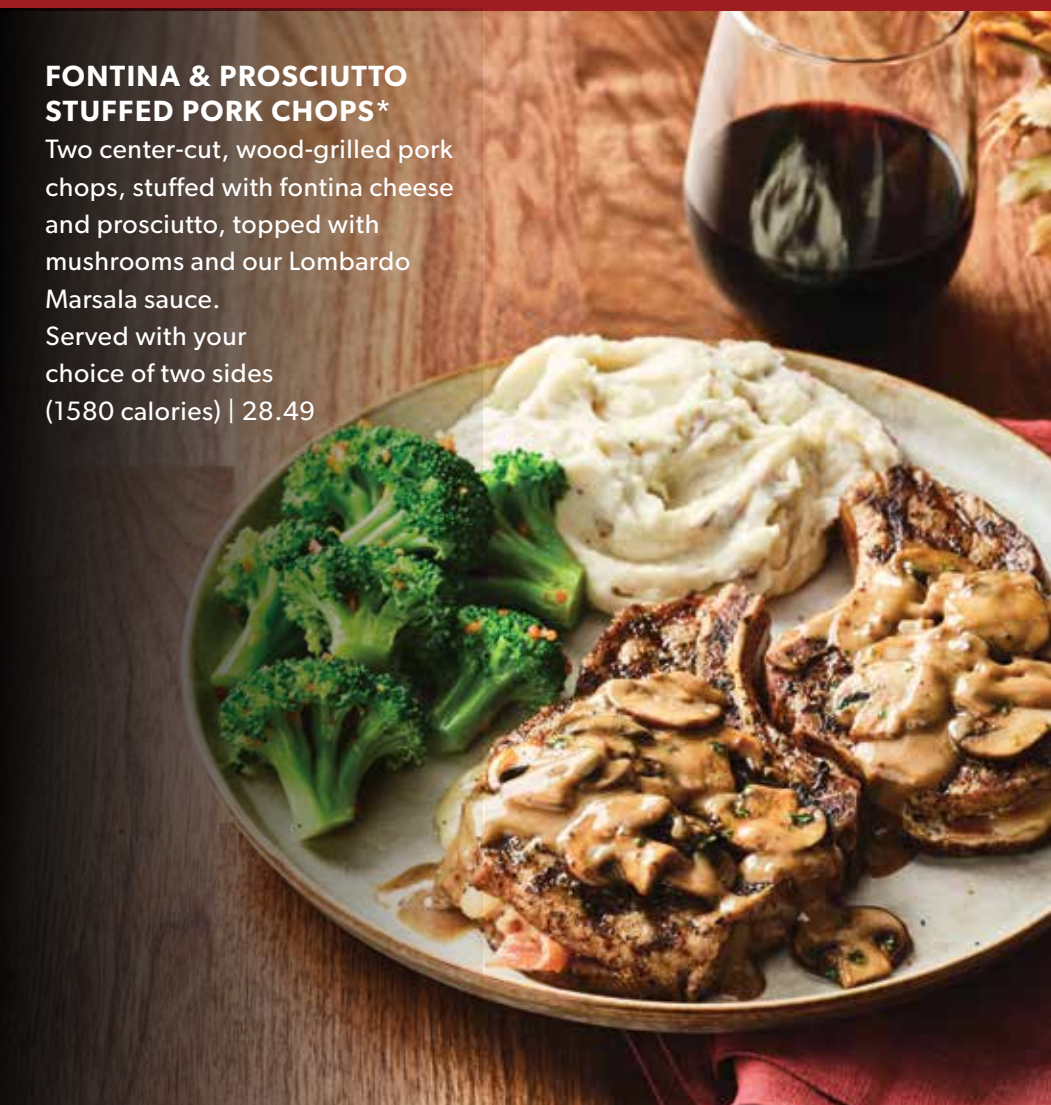


Gather your favorite people around satisfying dishes, delicious seasonal cocktails, and our expertly paired wines.



CHICKEN & SHRIMP CARBONARA

Spaghetti tossed in a rich bacon cream sauce with eggs, parmesan and romano cheese, diced tomatoes, and bacon topped with wood-grilled chicken and shrimp
(2050 calories) | 23.99



FONTINA & PROSCIUTTO STUFFED PORK CHOPS*

Two center-cut, wood-grilled pork chops, stuffed with fontina cheese and prosciutto, topped with mushrooms and our Lombardo Marsala sauce.

Served with your choice of two sides

(1580 calories) | 28.49

CARRABBAS.COM

2,000 calories a day is used for general nutrition advice, but calorie needs vary. Additional nutrition information available upon request.

*THIS ITEM IS COOKED TO ORDER. CONSUMING RAW OR UNDERCOOKED MEATS, POULTRY, SEAFOOD, SHELLFISH, OR EGGS WHICH MAY CONTAIN HARMFUL BACTERIA MAY INCREASE YOUR RISK OF FOODBORNE ILLNESS, ESPECIALLY IF YOU HAVE CERTAIN MEDICAL CONDITIONS.

FIND YOUR Perfect Fall Pairings



Gather your favorite people around satisfying dishes, delicious seasonal cocktails, and our expertly paired wines.



New! **ESPRESSO MARTINI**

Tito's Handmade vodka, Borghetti Espresso liqueur, Tiramisu liqueur and cold brew, garnished with chocolate drizzle
(200 calories) | 10.49

New! **SICILIAN BOURBON SOUR**

Known as "Red Gold" in Sicily, blood oranges are considered one of Italy's most treasured crops. Brother's Bond Straight Bourbon, Disaronno Amaretto and blood orange sour, garnished with a brûléed orange slice (340 calories)
10.49

CALABRIAN WINGS

Crispy wings tossed in a spicy Calabrian chile butter. Served with gorgonzola cheese or ranch dipping sauce
(1540 calories) | 16.49



CARAMEL APPLE CHEESECAKE**

New York-style cheesecake topped with caramel apples and toasted cinnamon pecans. Served with whipped cream and mint
(1230 calories) | 10.49



FEATURED **Pairing**

New! **CAFÉ BOOM BOOM****

Double Cappuccino Coffee with Kahlúa, Baileys Irish Cream and Grand Marnier. Served with a Pepperidge Farm® Milano® Cookie
(300 calories) | 10.49

2,000 calories a day is used for general nutrition advice, but calorie needs vary. Additional nutrition information available upon request.

**ITEM CONTAINS OR MAY CONTAIN NUTS. Espresso drinks are served with an almond biscotti. Wines contain sulfites.